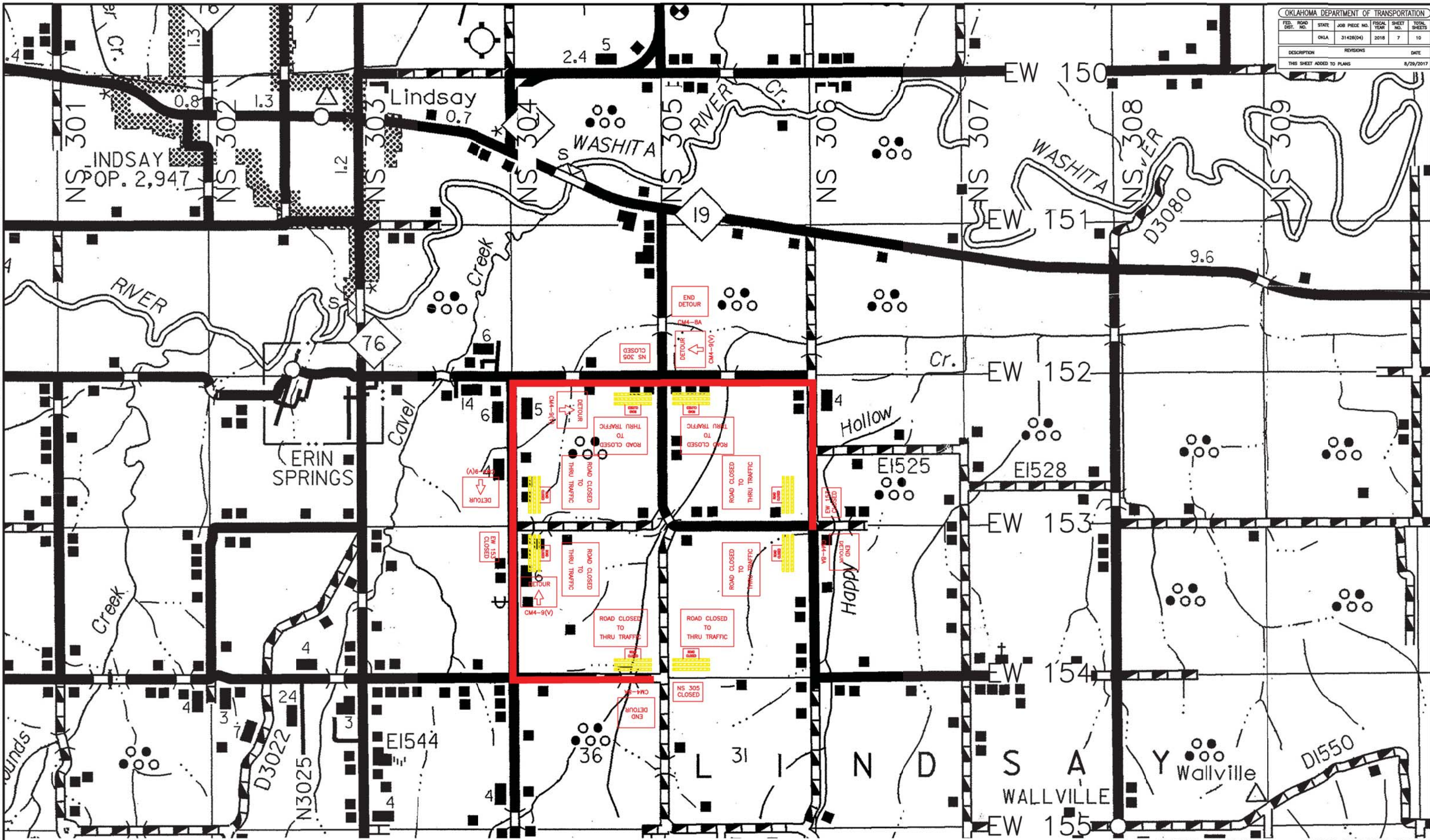


E:\1447 (GARCO-14-01)-GARVIN-CN-168\CAD\SHEETS\DETOUR SHEET.DWG sifrosch 4:55 PM

MEHLBURGER BRAWLEY

OKLAHOMA DEPARTMENT OF TRANSPORTATION						
FED. ROAD DIST. NO.	STATE	JOB PIECE NO.	FISCAL YEAR	SHEET NO.	TOTAL SHEETS	DATE
	OKLA	31426(04)	2018	7	10	
DESCRIPTION			REVISIONS		DATE	
THIS SHEET ADDED TO PLANS					8/29/2017	



THE CONTRACTOR MAY SUBMIT AN ALTERNATIVE DETOUR PLAN FOR APPROVAL BY THE ENGINEER.

GARVIN COUNTY HAPPY HOLLOW CREEK

DETOUR SHEET

J/P NO. 31426(04) SHEET NO. 19